

WINCOOL Cool Fiber

WINCOOL fiber absorbs warmth slowly but discharges heat swiftly; it has a long-lasting cooling effect, and effectively reduces the body temperature by 1-2 °C. The fiber offers wearers refreshing cold-spring feelings and comfort.



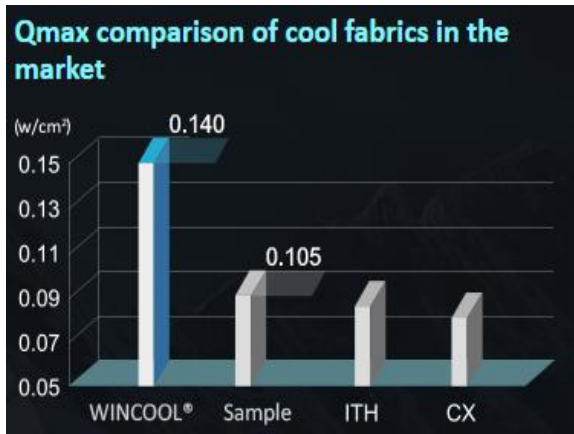
Dry Comfort



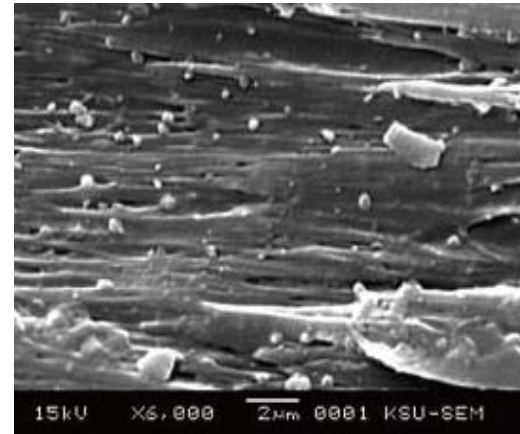
UV-Cut



Cooling Effect



Instant cooling effect, Q_{max} value is greater than 0.13 W/m², WINCOOL fiber discharges heat swiftly and stays cool.



Mineral powders are blended in the fiber to create an instantaneous cooling effect.



東和紡織股份有限公司
Tung Ho Textile Co., Ltd.